



CRCI²NA
CANCER & IMMUNOLOGY

CRCI²NA

CANCER & IMMUNOLOGY SYMPOSIUM

20 - 22 MARCH 2024 • NANTES

*Preliminary
Program*

GENERAL ORGANISATION

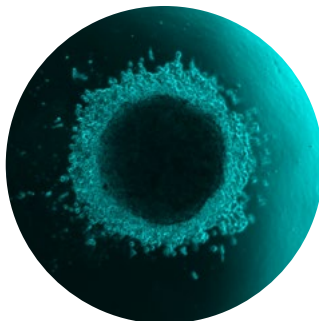
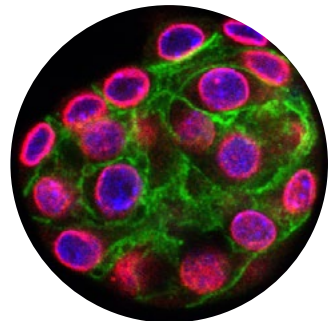
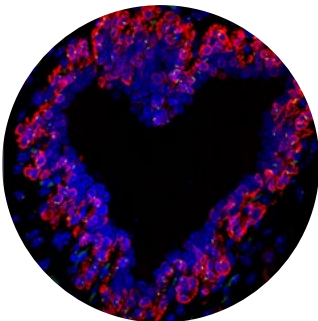
ATout.Com Agency - crci2na@atoutcom.com - www.atoutcom.com



CRCI²NA 2024 symposium: From normal tissues to cancer ecosystems

CRCI²NA, the leading cancer research center in the west of France, is organizing its inaugural symposium. This event will gather international experts in cancer biology. The goal of this meeting is to discuss mechanisms driving cellular heterogeneity, plasticity and signaling in normal and cancer cellular ecosystems, which contribute to cancer development, progression and therapeutic resistance. The most recent development in cancer immunotherapy and innovative anti-tumor strategies will also be discussed during the meeting. World renowned speakers will share their most recent research, unveiling new therapeutic vulnerabilities to defeat cancer. This engaging conference will be hosted in the vibrant and picturesque city of Nantes.

The organizing committee





WEDNESDAY, MARCH 20TH

- 4:00 p.m. **Participants welcoming - Registration & Coffee**
- 5:00 p.m. Opening remarks
- 5:15 p.m. **Keynote lecture:**
Robert A. Weinberg, *Whitehead Institute, MIT, USA*
- 6:00 p.m. **Welcoming Cocktail**

THURSDAY, MARCH 21ST

Session I - Mapping cellular heterogeneity and plasticity in normal tissues and cancers

- 9:00 a.m. Ievgenia Pastushenko, *ULB, Belgium*
- 9:30 a.m. Felipe Prósper, *Universidad de Navarra, Spain*
- 10:00 a.m. Eloïse Grasset, *CRCI²NA, France*
- 10:30 a.m. **Coffee break with partners**
- 11:00 a.m. Selected talk from abstracts
- 11:15 a.m. Selected talk from abstracts
- 11:30 a.m. Ilaria Elia, *KU Leuven, Belgium*
- 12:00 p.m. **Poster session I in Hall Pharma & Lunch break with partners**





THURSDAY, MARCH 21ST

Session II - Signaling in normal and cancer cellular ecosystems

- 2:00 p.m. Jeremy Rich, *UCSD, USA*
- 2:30 p.m. Nadine Laguette, *IGMM, France*
- 3:00 p.m. Colin Niaudet, *CRCI²NA, France*
- 3:30 p.m. **Coffee break with partners**
- 4:00 p.m. Selected talk from abstract
- 4:15 p.m. Selected talk from abstract
- 4:30 p.m. Jacky Goetz, *CRBS, Strasbourg, France*
- 5:00 p.m. **Poster session II in Hall Pharma - Wine & Cheese**
- 7:00 p.m. **Congress dinner - on registration**

FRIDAY, MARCH 22ND

Session III - Molecular basis of cancer therapeutic response and failure (part 1)

- 9:00 a.m. Samantha Terry, *King's College London, England*
- 9:30 a.m. Olivier Delattre, *Institut Curie, France*
- 10:00 a.m. David Chiron, *CRCI²NA, France*
- 10:30 a.m. **Coffee break with partners**



FRIDAY, MARCH 22ND

Session III - Molecular basis of cancer therapeutic response and failure (part 2)

11:00 a.m. Selected talk from abstracts

11:15 a.m. Selected talk from abstracts

11:30 a.m. To be defined

12:00 p.m. Lunch break with partners

Session IV - Immunotherapy and novel anti-tumor strategies

1:00 p.m. Karl-Johan Malmberg, *Institute for Cancer research, Oslo, Norway*

1:30 p.m. Rachel Golub, *Pasteur Institute, Paris, France*

2:00 p.m. Éric Letouzé, *CRCI²NA, France*

2:30 p.m. Coffee break with partners

2:45 p.m. Selected talk from abstract

3:00 p.m. Selected talk from abstract

3:15 p.m. Satu Mustjoki, *University of Helsinki, Finland*

3:45 p.m. Best oral communication & Posters award
Closing remarks





INVITED SPEAKERS

Olivier Delattre, *Institut Curie, France*

Ilaria Elia, *KU Leuven, Belgium*

Jacky Goetz, *CRBS, Strasbourg, France*

Rachel Golub, *Pasteur Institute, Paris, France*

Nadine Laguette, *IGMM, France*

Karl-Johan Malmberg, *Institute for Cancer research, Oslo, Norway*

Satu Mustjoki, *University of Helsinki, Finland*

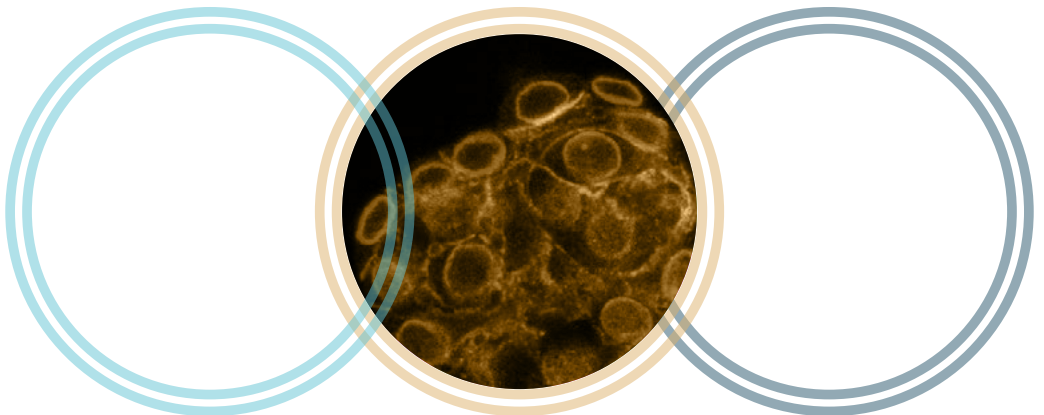
Ievgenia Pastushenko, *ULB, Belgium*

Felipe Prósper, *Universidad de Navarra, Spain*

Jeremy Rich, *UCSD, USA*

Samantha Terry, *King's College London, England*

Robert A. Weinberg, *Whitehead Institute, MIT, USA*





KEY DATES

Early Bird registration fee until: **December 15th**

Abstract Submission until: **December 15th**

REGISTRATION RATES

Online registration on www.atoutcom.com/crci2na/

Early Bird Registration Rates <i>Until December 15th</i>	Regular Registration Rates <i>From December 16th</i>
Non Academics 330€ πτс	Non Academics 350€ πτс
Academics 220€ πτс	Academics 275€ πτс
Student* / Post Doc* 110€ πτс	Student* / Post Doc* 165€ πτс

** Upon supporting documents*

We invite you to visit the tab **Practical Information** on the congress website for address venue and hotel recommandations

